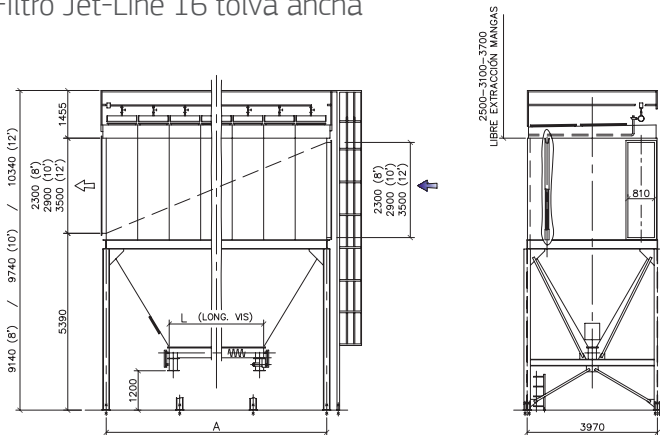


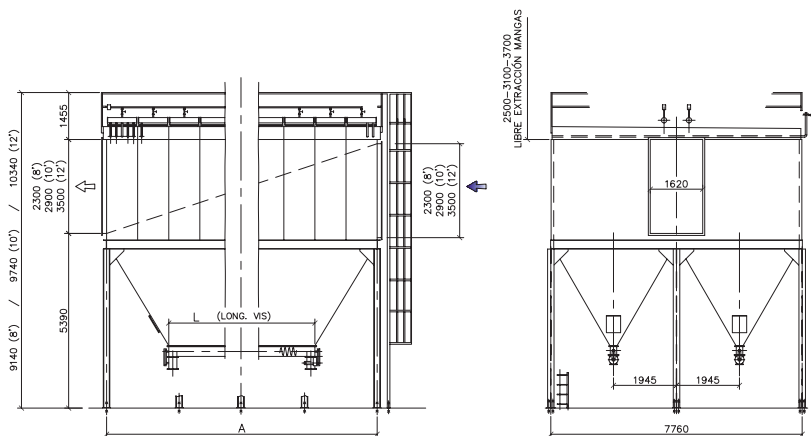
PLANOS //

- Filtro Jet-Line 16 tolva ancha



Nº DE MÓDULOS	3	4	5	6	7	8	9	10	11	12	13	14	15
FILTRO Nº MANGAS	16X15	16X20	16X25	16X30	16X35	16X40	16X45	16X50	16X55	16X60	16X65	16X70	16X75
A	2880	3840	4800	5760	6720	7680	8640	9600	10560	11520	12480	13440	14440
L	-	-	-	1920	2880	3840	4800	5760	6720	7680	8640	9600	10560

- Filtro Jet-Line 16 doble línea



MODELCO	JL16-60	JL16-70	JL16-80	JL16-90	JL16-100	JL16-110	JL16-120	JL16-130	JL16-140	JL16-150	JL16-160	JL16-170
SUPERFICIE FILTRANTE	(8')898 (10')1123 (12')1348	(8')1048 (10')1310 (12')1573	(8')1197 (10')1497 (12')1797	(8')1347 (10')1685 (12')2022	(8')1497 (10')1872 (12')2246	(8')1646 (10')2068 (12')2471	(8')1796 (10')2246 (12')2696	(8')1946 (10')2433 (12')2921	(8')2095 (10')2620 (12')3145	(8')2245 (10')2808 (12')3370	(8')2395 (10')2995 (12')3595	(8')2544 (10')3182 (12')3819
Nº DE MÓDULOS	12	14	16	18	20	22	24	26	28	30	32	34
FILTRO N°MANGAS	16x60	16x70	16x80	16x90	16x100	16x110	16x120	16x130	16x140	16x150	16x160	16x170
A	5760	6720	7680	8640	9600	10560	11520	12480	13440	14440	15360	16320
L	1920	2880	3840	4800	5760	6720	7680	8640	9600	10560	11520	12480



JL 4x4	A	B	c	D	E	F	G	Caudal medio a filtrar en M/h (orient.)
JL 4x4 - 6(3')	796	108	4x160=640	24	570	950	4045	630
JL 4x4 - 10(5')						1600	4635	1040
JL 4x4 - 15(8')						2500	5535	1680
JL 4x4 - 19(10')						3100	7035	2100
JL 4x4 - 23(12')						3700	6735	2550

JL 5x5	A	B	c	D	E	F	G	Caudal medio a filtrar en M/h (orient.)
JL 5x5 - 9(3')	974	117	5x160=800	28	720	950	4135	980
JL 5x5 - 15(5')						1600	4785	1630
JL 5x5 - 24(8')						2500	5685	2630
JL 5x5 - 30(10')						3100	6285	3270
JL 5x5 - 36(12')						3700	6885	3930

JL 6x6	A	B	c	D	E	F	G	Caudal medio a filtrar en M/h (orient.)
JL 6x6 - 13(3')	1152	126	6x160=960	32	870	950	4285	1420
JL 6x6 - 22(5')						1600	4935	2350
JL 6x6 - 35(8')						2500	5835	3770
JL 6x6 - 43(10')						3100	6435	4700
JL 6x6 - 51(12')						3700	7035	5580

JL 7x7	A	B	c	D	E	F	G	Caudal medio a filtrar en M/h (orient.)
JL 7x7 - 18(3')	1330	135	7x160=1120	36	1020	950	4435	1940
JL 7x7 - 29(5')						1600	5085	3210
JL 7x7 - 47(8')						2500	5985	5140
JL 7x7 - 59(10')						3100	6585	6410
JL 7x7 - 71(12')						3700	7185	7620



JL 8x8	A	B	c	D	E	F	G	Caudal medio a filtrar en M/h (orient.)
JL 8x8 - 23(3')	1508	144	8x160=1280	40	1170	950	4585	2530
JL 8x8 - 38(5')						1600	5235	4190
JL 8x8 - 62(8')						2500	6135	6710
JL 8x8 - 77(10')						3100	6735	8370
JL 8x8 - 92(12')						3700	7335	9950

JL 9x9	A	B	c	D	E	F	G	Caudal medio a filtrar en M/h (orient.)
JL 9x9 - 29(3')	1686	153	9x160=1440	44	1330	950	4745	3200
JL 9x9 - 48(5')						1600	5395	5300
JL 9x9 - 78(8')						2500	6295	8490
JL 9x9 - 97(10')						3100	6895	10590
JL 9x9 - 116(12')						3700	7495	12590

JL 10x10	A	B	c	D	E	F	G	Caudal medio a filtrar en M/h (orient.)
JL 10x10 - 60(5')	1924	117	11x160=1760	52	1540	1600	5680	6500
JL 10x10 - 96(8')						2500	6580	10400
JL 10x10 - 117(10')						3100	7180	12700
JL 10x10 - 142(12')						3700	7780	15400



JL 11x11	A	B	c	D	E	F	G	Caudal medio a filtrar en M/h (orient.)
JL 11x11 - 73(5')	2102	126	12x160=1920	56	1690	1600	5830	7900
JL 11x11 - 116(8')						2500	6730	12600
JL 11x11 - 142(10')						3100	7330	15400
JL 11x11 - 172(12')						3700	7930	18600

JL 12x12	A	B	c	D	E	F	G	Caudal medio a filtrar en M/h (orient.)
JL 12x12 - 86(5')	2280	135	13x160=2080	60	1850	1600	5990	9300
JL 12x12 - 138(8')						2500	6890	14900
JL 12x12 - 168(10')						3100	7490	18200
JL 12x12 - 205(12')						3700	8090	22200

JL 13x13	A	B	c	D	E	F	G	Caudal medio a filtrar en M/h (orient.)
JL 13x13 - 102(5')	2458	144	14x160=2240	64	1920	1600	6060	11100
JL 13x13 - 162(8')						2500	6960	17500
JL 13x13 - 198(10')						3100	7560	21400
JL 13x13 - 240(12')						3700	8160	26000

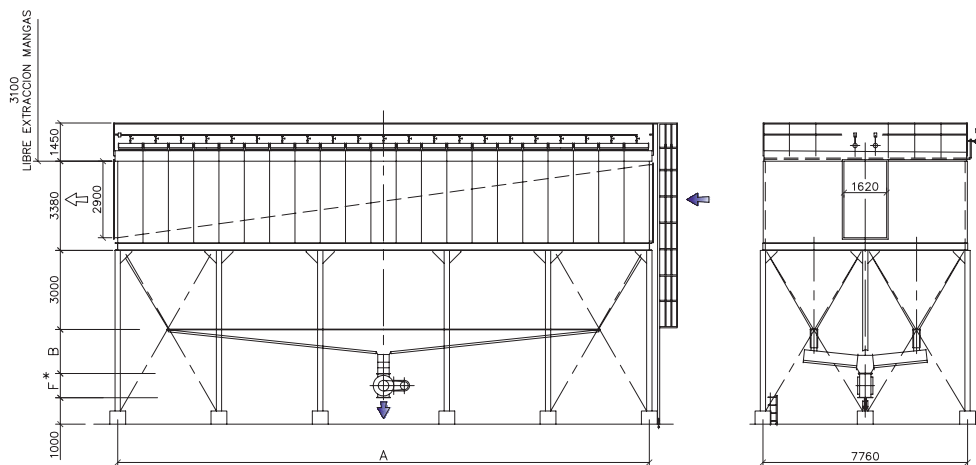


JL 14x14	A	B	c	D	E	F	G	Caudal medio a filtrar en M/h (orient.)
JL 14x14 - 118(5')	2636	153	15x160=2400	68	2070	1600	6210	12800
JL 14x14 - 188(8')						2500	7110	20300
JL 14x14 - 230(10')						3100	7710	24900
JL 14x14 - 278(12')						3700	8310	30000

JL 15x15	A	B	c	D	E	F	G	Caudal medio a filtrar en M/h (orient.)
JL 15x15 - 135(5')	2876	113	17x160=2720	76	2280	1600	6420	14600
JL 15x15 - 216(8')						2500	7320	23400
JL 15x15 - 263(10')						3100	7920	28400
JL 15x15 - 320(12')						3700	8520	34600

JL 16x16	A	B	c	D	E	F	G	Caudal medio a filtrar en M/h (orient.)
JL 16x16 - 154(5')	3054	122	18x160=2880	80	2435	1600	6575	16600
JL 16x16 - 243(8')						2500	7475	26200
JL 16x16 - 300(10')						3100	8075	32400
JL 16x16 - 364(12')						3700	8675	39300

- Filtro Jet-Line 16 con aerodeslizador



MODELO	SUPERFICIE FILTRANTE	A	B
JL-16x120-2246	2246	11520	1380
JL-16x130-2433	2430	12480	1430
JL-16x140-2620	2620	13400	1480
JL-16x150-2808	2880	14400	1530
JL-16x160-2995	2995	15360	1580
JL-16x170-3185	3185	16320	1630
JL-16x180-3370	3370	17280	1680
JL-16x190-3557	3557	18240	1730
JL-16x200-3745	3745	19200	1780
JL-16x210-3932	3932	20160	1830
JL-16x220-4120	4120	21120	1880
JL-16x230-4305	4305	22080	1930
JL-16x240-4495	4495	23040	1980
JL-16x250-4680	4680	24000	2030

EJEMPLO DE DENOMINACIÓN

